

NATECO₂ Lab
- Your Analytical Companion -



Your Single-Source Provider for:
Content Analytics
Residues & Contaminants
Method Development & Validation
Stability Analysis

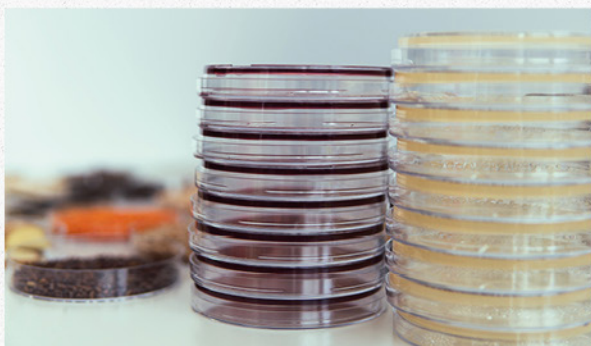
Who we are

The NATECO₂ Lab is an accredited laboratory, which focuses on lipophilic matrices.

We offer our customers an excellent range of services – from initial consultation – up to tailor-made analytical solutions. Upon demand, we can provide statements on conformity, regarding corresponding legal guidelines or customer specifications.



We utilize our long-term experience and flexibility within lipophilic extract area, to solve challenging analytical problems.



Analytics

Our chemical and physical methods of analyses divide into following areas:

Content Analytics of Food, Feed & Cosmetics

Cannabinoids – Carotenoids – Vitamins –

Chlorophylls – Flavouring Agents

Polyphenols – Triterpenes - Gingerols/Shogaols

Fat Analytics

Sterols – Fatty Acid Profile – Triglycerides –

Phospholipids – Fat Metrics

Residues & Contaminants

Pesticides – PAHs – Pyrrolizidine Alkaloids –

Softening Agents – Residual Solvents

Mycotoxins – PCBs – Cannabinoids (d9-THC-equivalents) – Microbiological Contaminants

Further analyses and matrix-specific quotes, upon request.



Analytics

Moreover we also offer the following services:



Method Development & Validation

We support you in method development, or develop individual methods for your task, incl. validation.



Stability Analyses & Stability Tests

A combination of different storage conditions allows for realistic stability tests, executed by our in-house laboratory.

We are happy to provide a comprehensive package of analyses, through our broad network of partnering laboratories.

Methods & Technique

We work with following techniques: GC with FID, MS- and MS/MS-detection; HS-GC-FID/MS; LC with DAD, MS- and MS/MS-detection. We are able to analyze fat contents, besides classical Soxhlet-extraction, via our fat-NMR as an express service. By UV/VIS-spectroscopy it is possible to determine individual and cumulative photometric parameters.

Our applied procedures comprise specifically developed methods, official methods, as well as international ISO-procedures.

A modern, digital Laboratory Management System enables individual customer access for rapid retrieval of results.



Contact

Hopfenveredlung St. Johann GmbH

LABORATORY NATECO₂

Auenstr. 18-20

85283 Wolnzach, Germany

Email: analytik@nateco2.de

For more information please see:

www.nateco2.de/en/analytical-lab

